

c10-5

John Beverington

Courses down the Cr
from the Ironwood

N^o: 31 W. 29 P^t

N^o: 45 W. 36 P^t

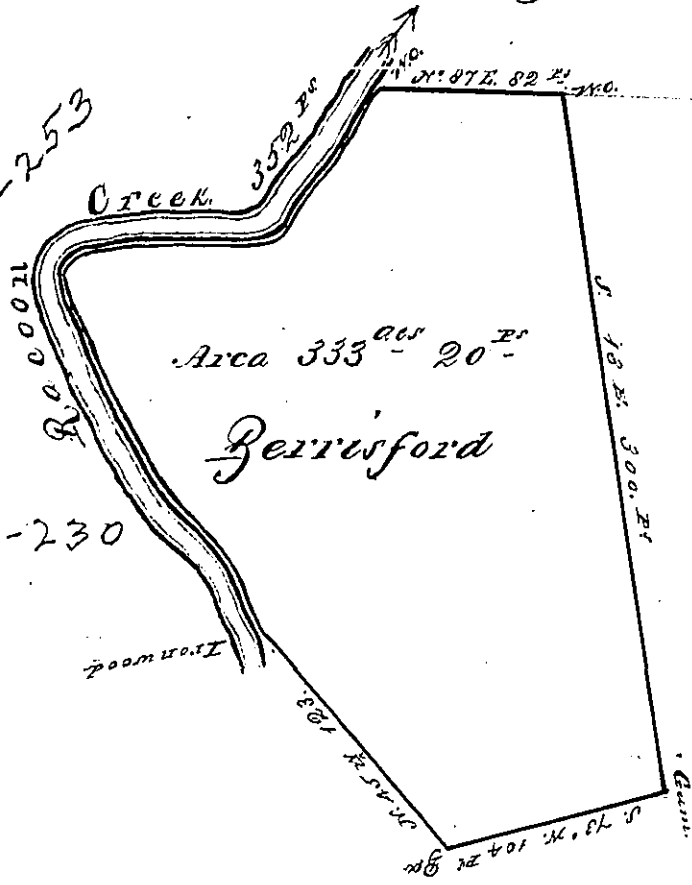
N^o: 29 W. 113 P^t

N^o: 80 E. 94 P^t

N^o: 28 $\frac{1}{2}$ E. $\frac{80 P^t}{352}$

to y^e White Cr. c177-230

A40-253



156 Sugar

James Tuller

c223-54

Wax

A Draught of a Survey called Berrisford
lying on Raccoon Cr. Washington County
Cont^y. 333 acs & 20 P^t. with y^e usual allowance
executed Nov^r: 10th 1785 in pursuance of a
Warrt. from Philad^a for 300 acs dated
August y^e: 30th 1785 in the name of
Joseph Tarrance -

John Lukens Esq^r. }
Surv^r: Genl. }

Presley Nevill }
Math^w Ritchie } Survs.

IN TESTIMONY that the above is a copy of the original remaining on file in the
Department of Internal Affairs of Pennsylvania, made con-
formably to an Act of Assembly approved the 16th day of
February, 1833, I have hereunto set my Hand and caused
the Seal of said Department to be affixed at Harrisburg, this

Eleventh day of January 1877

Wm. M. Candler
Secretary of Internal Affairs